



Manure spreader

TIDAPARS INDUSTRIAL GROUP



Manure devices

Manure Spreader



Garden Row Spreader



Row Spreader



Mulching Machine



What is manure?

- Manure is a decomposed form of dead plants and animals that is applied to the soil to increase productivity.

Disadvantages Traditional Agricultural Methods:

- Manure distribution in the field.
- Nutrients availability to all plants.
- Very low speed.
- Low performance.



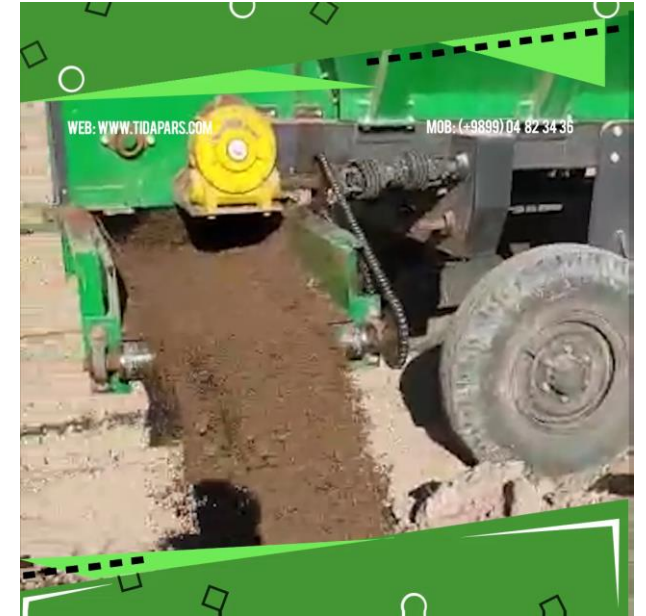
Manure spreader



- ❑ This machine with two spreading discs with radial blades, are designed to spread different manure (cattle manure, compost, organic wastes, lime, poultry manure, gypsum, wood shavings etc.) for the distribution of humid and dry manure.



Garden Row Spreader



- ❑ Garden Spreaders are designed for vineyard and orchard spreading where the manure needs to be laid along a drip line, or in a narrow band, such as required under trees and vines.
- ❑ Models starting from $3.5 m^3$ capacity, up to $6.5 m^3$, these high quality machines are well suitable to operations of all different sizes.



TIDAPARS Row Spreader



- TIDAPARS Row Spreader used for farms where the manure needs to be laid along a drip line, or in a narrow band.
- furrows option to create furrows before dropping fertilizer
- 3/5 (2-wheeled-small) and 6/5 (4-wheeled-large) ton capacity per m^3 Falling of manure in the space
- Suitable for vegetable and summer row crops
- Uniformity in spraying at different speeds. crumbles the manure very well. The horizontal shredder



Mulching Machine



- ❑ Mulching Machine is the best way to recover and redeveloped your farming. The making purpose behind this agriculture machine is to save time and money which is the most important for all the farmers.
- ❑ This machine will do the following works / 6 in 1 operation.
- ❑ Groove creation – Fertilizing – Placing the irrigation tape – Nylon mulching placing – Hide edge of the nylon into soil – Piercing part



Dual use manure spreader

- ❑ Manure Spreader Machines Of TIDAPARS Are Generated To Spread The Fertilizer Over A Fallow Land By Dropping The Manure Over The Impeller Disc.

- ❑ Manure Spreaders Are Under The Category Of Mechanized Agriculture. Mechanized Spreading Is Done Based On Soil Type And Management. The Design Of TIDAPARS Manure Spreaders Has Been Done In 3 Ways Based On The Needs Of Farmers:
 - Fertilizer Transfer To The Spraying Disc Section: TIDAPARS Manure Spreader Machine.
 - Fertilizer Drop Valve: Row Spreader.
 - Conveyor: TIDAPARS Garden Manure Spreader.



Triple use manure spreader

Triple use manure spreader for:



Garden



Field



Summer
crops

Dual use manure spreader

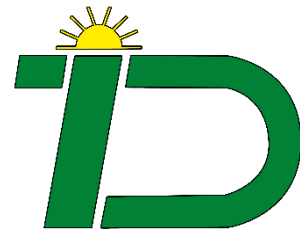


❑ Before of distribution discs, is located one horizontal shredder. Crumbles the manure very well.

❑ To spread at the besides of farm (near to road), left and right spreading discs in this machine, everyone has independent gear box and operator can deactivate each one.

Interesting, right?

This is just a sneak preview of the full presentation. We hope you like it! To see the rest of it, just click here to view it in full on www.TIDAPARS.com



Then, if you'd like, you can also log in to TIDAPARS.COM to download the catalogs for free.